



Jabatan Pelajaran Negeri Kedah Darul Aman

Peperiksaan Percubaan SPM 2010

INFORMATION & COMMUNICATION TECHNOLOGY (Kertas 1)

Question No. No. Soalan		Candidate's Answer <i>Jawapan Calon</i>	Marks <i>Markah</i>
1	(i)	banking / <i>perbankan</i>	1
	(ii)	education / <i>pendidikan / pelajaran</i>	2
2		B	3
3		A	4
4	(i)	B	5
	(ii)	C	6
5		C	7
6	(i)	USB port	8
	(ii)	Expansion slot	9
7	(i)	Text Command Interface / Command Line Interface	10
	(ii)	Graphics User Interface / GUI	11
8		True / <i>Benar</i>	12
9		C	13
10		Transmission Control Protocol/Internet Protocol / TCP/IP	14
11	(i)	Q	15
	(ii)	R	16
12		Modem	17
13		True / <i>Benar</i>	18
14		B	19
15		Web-based / <i>Berasaskan web</i>	20
16		C	21
17	(i)	card / <i>kad</i>	22
	(ii)	time frame / <i>kerangka masa</i>	23
18		True / <i>Benar</i>	24
19	(i)	Structured / <i>Berstruktur</i>	25
	(ii)	Object-Oriented / OOP / <i>Berorientasikan Objek</i>	26
20	(i)	Selection Control Structure / <i>Struktur Kawalan Pilihan</i>	27
	(ii)	Sequence Control Structure / <i>Struktur Kawalan Berjujukan</i>	28
21	(i)	Design / <i>Rekabentuk</i>	29
	(ii)	Pseudo code / <i>Kod Pseudo / Storyboard / Papan Cerita</i>	30
22		A	31
23	(i)	Procedure / <i>Prosedur</i>	32
	(ii)	Software / <i>Perisian</i>	33
24		C	34
25		False / <i>Palsu</i>	35

Question 26 (i)

- Fastest speed of communication
- Lower communication cost
- Reliable mode of communication
- Effective sharing of information
- Paperless environment
- Borderless communication
- Any relevant answer.

[1 mark] – each correct advantage

Maximum 2 marks

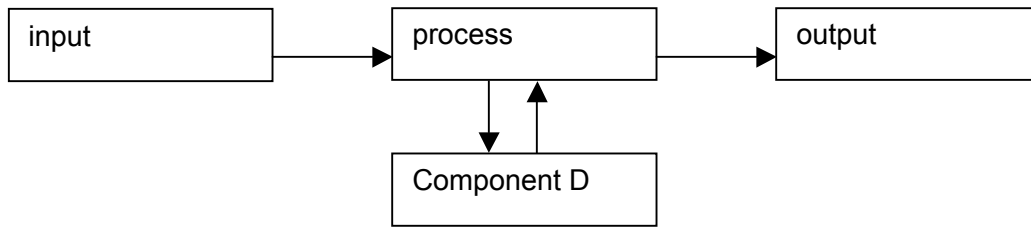
Question 26 (ii)

- Social problem (or any related answer)
- Health problem (or any related answer)
- Any relevant answer.

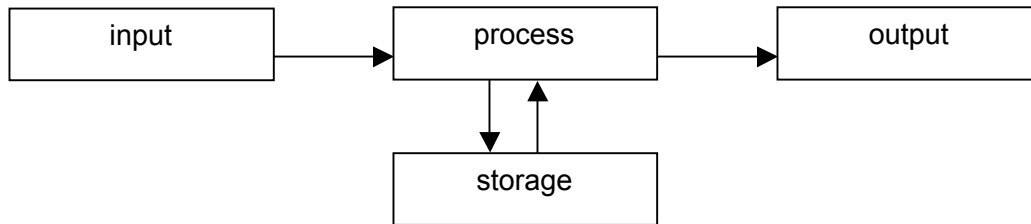
[1 mark] – each correct disadvantage

Maximum 2 marks

Question 27 (a)



Alternatif 1



Alternatif 2

[1 mark] – draw 4 blocks correctly.

[1 mark] – draw 3 or 4 arrows correctly.

Question 27 (b)

(i) Example Component D.

- Flash drive / Thumb drive / Pen drive
- Compact disk / CD
- Hard disk
- Any relevant answer.

[1 mark] – one correct example only

(ii) Function Component D.

- Storing data

[1 mark]

Question 28 (a)

(i) LAN or Local Area Network or Rangkaian Kawasan Setempat
[1 mark]

(ii) WAN or Wide Area Network or Rangkaian Kawasan Luas
[1 mark]

Question 28 (b)

LAN	Aspect	MAN
Small geographical area.	Coverage	Larger area; within a city or town.
Connects computers and devices.	Component	Connects LANs.
Faster	Speed	Slower
Any relevant answer		

Alternative

Local Area Network (LAN) connects computers and devices while Metropolitan Area Network (MAN) connects LANs.

[2 marks] – 1 correct point for both LAN and MAN.

[1 mark] – 1 correct point for LAN or MAN.

[1 mark] – correct points for both LAN and MAN but not from the same aspect or not parallel.

Question 29 (a)

(i) Analysis Phase or Fasa Analisis
[1 mark]

(ii) Design Phase or Fasa Rekabentuk
[1 mark]

Question 29 (b)

- In Evaluation Phase selected users are involved in the evaluation of multimedia programs.
- The Evaluation Phase focuses on overall presentation and effectiveness of the multimedia.
- Any relevant answer.

[1 mark] – 1 correct fact.

[1 mark] – 1 correct explanation for the fact.

Question 30 (a)

(i) Interpreter or Pentafsir
[1 mark]

(ii) Compiler or Pengkompil
[1 mark]

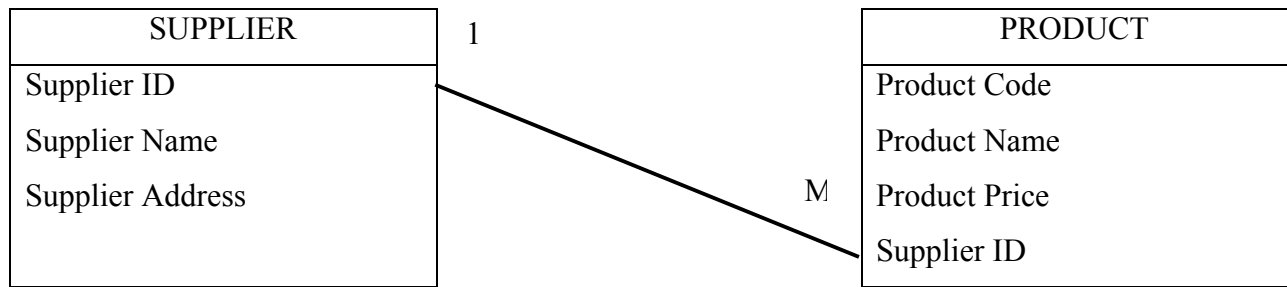
Question 30 (b)

X (Interpreter)	Aspect	Y (Compiler)
Translate programming statement line by line and execute it immediately.	Execution	Translate entire programming statement and execute it later.
No object code is saved.	Object Code	Store machine language as object code on the disk.
Interpreted code run slower.	Speed	Compiled code run faster.
Any relevant answer.		

[2 marks] – 1 correct point for both Interpreter and Compiler.

[1 mark] – 1 correct point for Interpreter or Compiler.

[1 mark] – correct points for both Interpreter and Compiler but not from the same aspect or not parallel.

Question 31 (i)

[4marks]

- *1 mark for table Supplier with correct fields.
- *1 mark for table Product with correct fields.
- *1 mark for relationship line between primary key and foreign key.
- *1 mark for type of relationship. (e.g.: 1:M, 1:∞)

Question 31 (ii)

- Primary key can contain only unique value but foreign key may contain duplicate value.
- Primary key cannot accept null value but foreign key can be null value.
- Any relevant answer.

[2 marks] – 1 correct point for both primary key and foreign key.

[1 mark] – 1 correct point for primary key or foreign key.

[1 mark] – correct points for both primary key and foreign key but not from the same aspect or not parallel.

Question 31 (iii)

Query / Kuir

[1mark]

Question 32 (i)

- to define the scope of the project
- to discuss with the client
- to search for financial resources, equipment and facilities
- to coordinate the production team

Example:

The Project Manager's role is to discuss with the client to find the specific needs for the multimedia such as the target audience.

[3 marks]

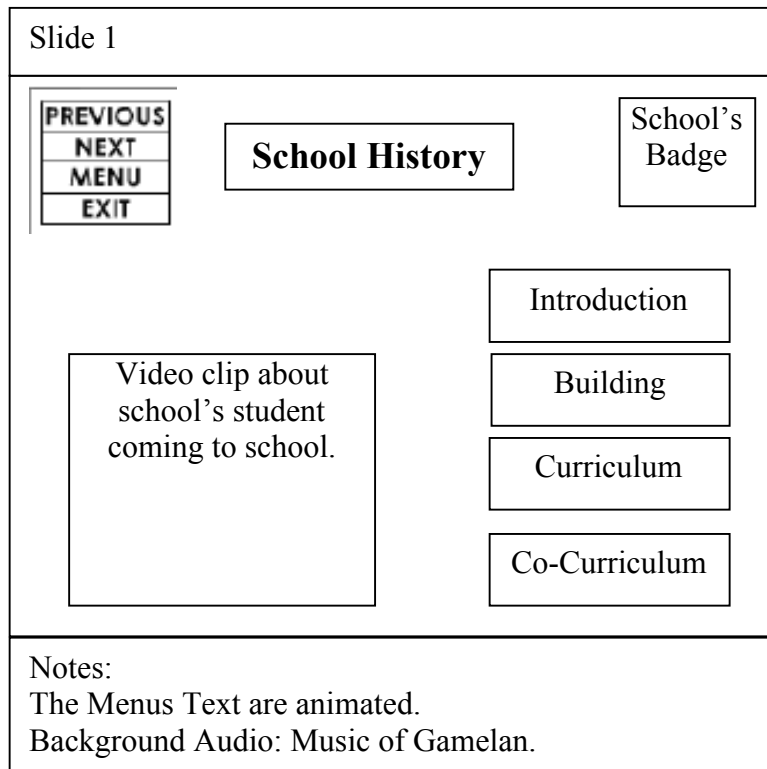
*1 mark for the role

*1 mark for the explanation

*1 mark for example

Question 32 (ii)

Any layout of story board which include all multimedia element and navigation / button are acceptable.



[4 marks]

*1 mark for 5 element of multimedia.

*1 mark for label or notes.

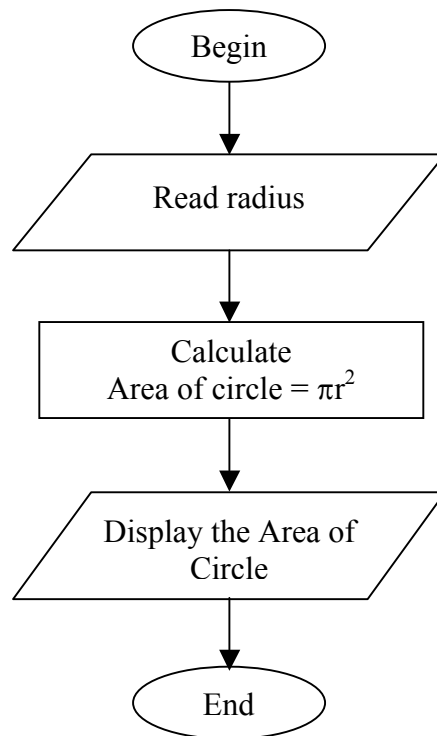
*1 mark for button or navigation.

*1 mark for slide number or title.

Question 33 (a)

Input: radius
Process: calculate the area of a circle
Output: area of circle

[3 marks]

Question 33 (b)

[4 marks]

- *1 mark for Begin and End
- *1 mark for Input (read, get or input)
- *1 mark for Process (calculate)
- *1 mark for Output (display, print or output)