

**Shceme Trial ICT 2014**  
**Section A**

Question No. <i>No. Soalan</i>		Candidate's Answer <i>Jawapan Calon</i>	Marks <i>Markah</i>
1		B	1
2		True	2
3		Slander	3
4		C	4
5		C	5
6		False	6
7	a)	Z	7
	b)	X	8
8		Proprietary Software	9
9		LAN	10
10	a)	Bus	11
	b)	Star	12
11		Transmission Control Protocol / Internet Protocol	13
12	a)	Intranet	14
	b)	Network Interface Card (NIC)	15
13		B	16
14	a)	Animation / Animasi	17
	b)	Graphic / Grafik	18
15		Clarity / Kekemasan	19
16		Graphic Artist	20
17		Implementation	21
18		C	22
19	a)	Logical	23
	b)	Object oriented programming	24
20	a)	X	25
	b)	Y	26
21	a)	string	27
	b)	double	28
22	a)	component	29
	b)	Data	30
23	a)	IV	31
	b)	III	32
24	a)	delete	33
	b)	Field	34
25	a)	book id	35
	b)	unique value	36

Section B answer [ 20 marks]

26 i. List **two** usages of ICT (2marks)

- For self access learning
- As a reference tool / source of reference
- E-learning
- Other relevant answers.

ii. State **two** differences between computerized and non computerized systems (2marks)

Criteria	Email	Letter by post
Speed	Reach instantly	Take at one day to reach
cost	At no cost	Have to buy stamp to send
Security	Email reach the receiver	Cost lost in the post

27. a) i. Windows

ii. starting a computer/ managing data & program/ managing memory/ configure devices/ acts as a user interface. (2marks)

b) resize the graphic/ draw and colour the graphics/ change the contrast/ other relevant answers. (2marks)

28. a) TCP/IP ( 1 mark)

b)

Intranet	Extranet	Internet
An internal network accessed by individual within an organization (X)	An internal network accessed by organization and its clients and suppliers. (Y)	A global network accessed by everyone. (Z)
Tight security	Tight security	Low security

29 a) i. Card concept.

ii) It is based on the idea of card stacks containing graphics, audio, video, text and animation.

The elements and events are organized as pages in a book or a stack of cards.

(2marks)

b) draw a storyboard and design user interface

get ready all the elements needed in his multimedia program like graphics / texts / audio / video

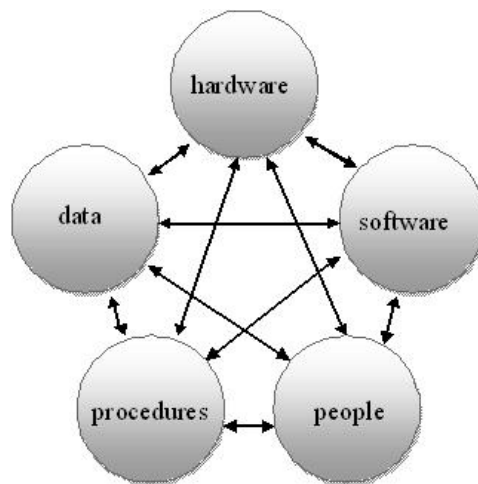
(2marks)

30 a)

(2 marks)

Data	Raw materials that we enter into the computer for us to process into useful information. Data can be figure, texts, numbers and symbols
People	involved is information systems personnel and end users.
Procedure	are operating instructions for the user of an information system. Procedures can be in the form of guidelines in the user manuals
Software	programs for the computers to carry out most of the instructions related to information processing.
hardware	all computer equipment used to perform input, processing and output functions. Hardware resources also include all media on which data is recorded, such as paper, floppy disks and compact discs

b)



(2marks)

### Section C

31a) constant =  $\pi$

Variable = radius, height, volume

(2marks)

b) syntax error

(1mark)

the coding has wrong spelling in command and declaration

(2marks)

c)

Dim Radius. Height as integer → Dim Radius, Height as integer

Or

Hight = Val(txtHeight.Text) → Height = (Val(txtHeight.Text)) (2 marks)

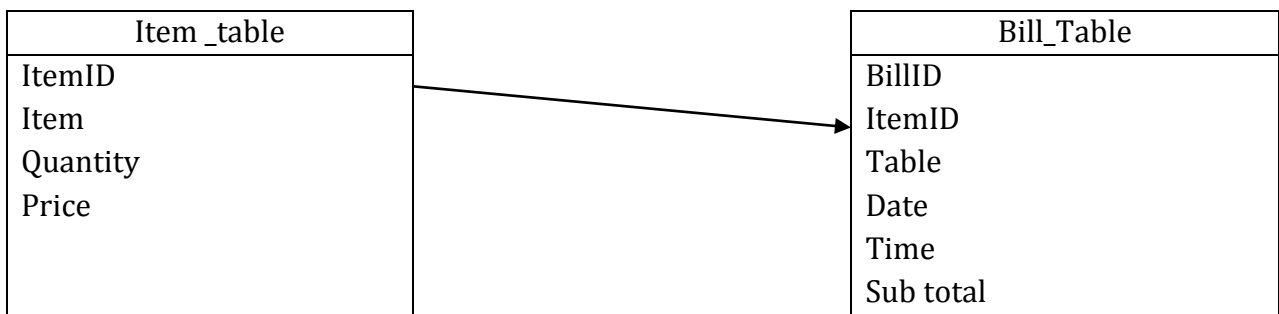
32 a) Item ID. Item ID is a primary in another table (Item table) (2 marks)

b) (2 marks)

Primary key	Foreign key
1. must have unique value 2. link to the data in that table	1. may have duplicate values 2. link to a primary key in another table

c)

(3marks)



1 mark for 2 tables

2 marks for primary key in each table

33. a) Local area network (LAN)

Is a smallest network which operated within a limited physical area such within a single building

(1 mark)

b)

(2 marks)

criteria	33(a)	WAN
Transmission media type	Twisted pair	Fibre optic, radio wave and satellite
Network size	small	largest
Cost	cheapest	expensive

c) X = Modem

- enable a computer to transmit data over telephone or cable lines

Y – Network interface card (NIC)

- allow computers to communicate over a computer network

(4 marks)